



**Herasis**  
Lab Solutions

# **HERAIS TOTAL LABORATORY FURNITURE SOLUTIONS**



# Contents

<b>Contents</b>	<b>Page</b>
Introduction	3
Laboratory Furniture Systems	4-7
Cabinets Materials (Cabinets Types)	8-10
Worktop Options	12-13
Wall Mounted Cabinets	14
Tall Storage cabinet	15
Fittings and Accessories	16-17
Fume Hoods Cupboard	18-20
Laboratory Items	21-22
Education Laboratory	24
Quality Assurance	25



## Introduction

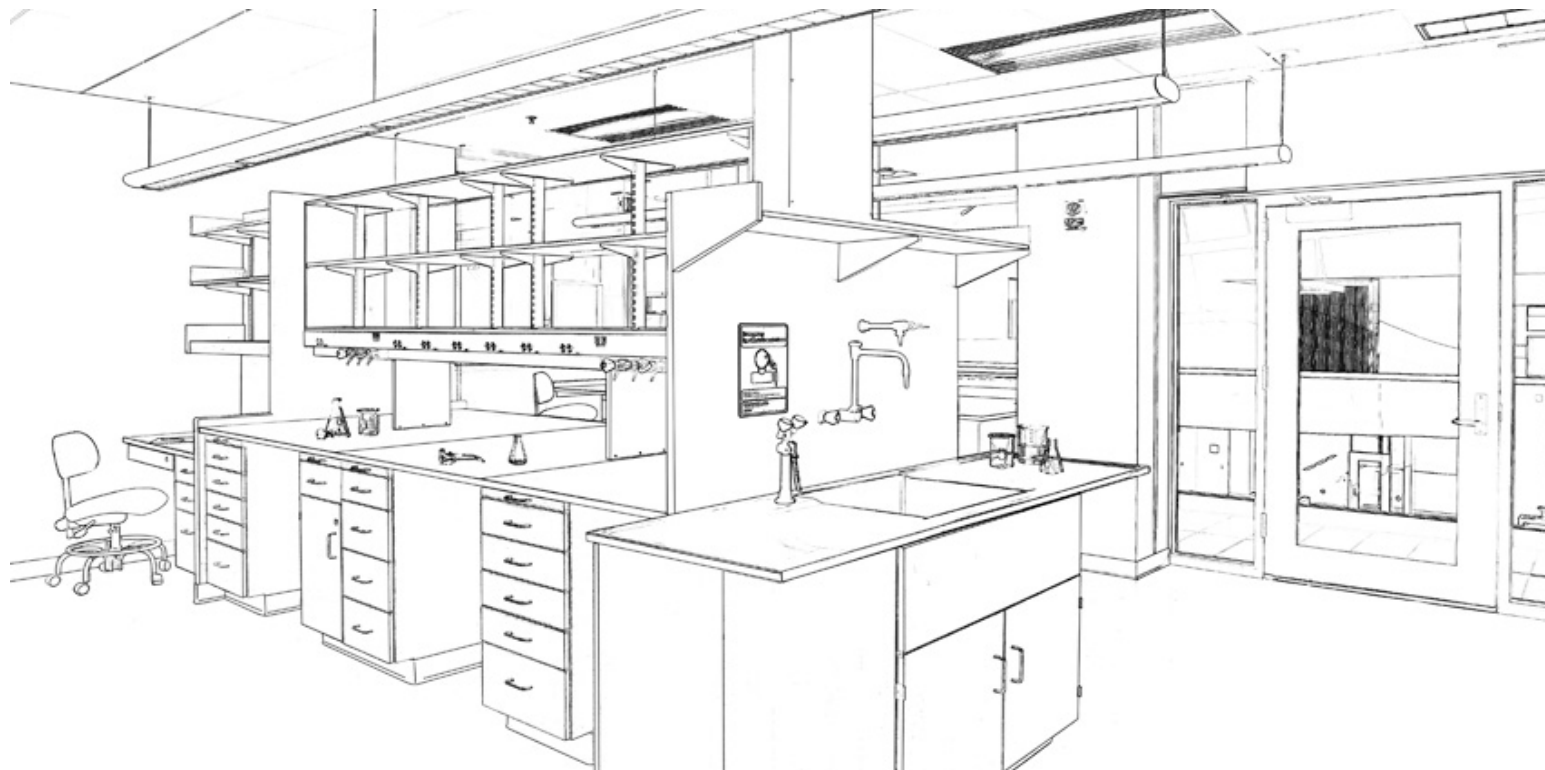
In cooperation with our business partners **HERAIS** is pleased to provide this visual profile of the capabilities offered for the Laboratory Industry.

HERAIS is proud to have accomplished numerous laboratory projects at any markets in the world.

Servicing the Ministries of Education for schools and universities, as well as hospitals, education, research & development, biotechnology sectors, pharmaceutical companies, food and chemical industries.

## Design & planning

Based on customer needs and wants coupled with functionality, safety and aesthetics, empty rooms or existing facilities can be designed and enhanced with modern design and layout features.



\*\*\* Please check HERAIS PLANNING & DESIGN CATALOGUE

[www.heraiis.ca](http://www.heraiis.ca)

## Laboratory Furniture Systems

### **HE-1 / Flooring System (No Frame Required)**

Lower cupboards are directly on the floor, this system is simple and easy to control. Surface top will be fixed directly on the lower cabinets. Its heavy-duty system and can be designed easily.

The benches are designed and produced according to SEFA-8 standard.



## **HE-2 / H-Frame System**

Lower cupboards can be suspended under the bench, equipped with or without wheels. System or bench constructed on 30mm X 30mm X 16mm thick epoxy powder coated steel tube.

This system is the best for school labs and other education laboratories.

The benches are designed and produced according to SEFA-8 standard.



### **HE-3 / C-Frame System (Flexible System)**

C- Frames are technology evolved as well as extremely functional and aesthetic. They are designed according to a modular combination.

Allowing a diversity of layouts, without interfering with the global aesthetic look. C-Frames have several modules in length, depth and height, including corner module. Each unit is composed of a dismantlable frame made of 60mm X 40mm X 20mm Thick. epoxy powder coated steel frame.

The benches are designed and produced according to SEFA-8 standard.



### **HE-4 / HERAIS Full Flexi (Full Flexible System)**

This system is combination between C-Frame along with suspended and mobile under bench cabinet. The system is fully flexible. You can adjust the height of the tops. Mobile cabinets or shifting the suspended cabinet As you need. C- Frames are technology evolved as well as extremely functional and aesthetic. They are designed according to a modular combination. Allowing a diversity of layouts, without interfering with the global aesthetic look. HE-4-system have several modules in length, depth and height, including corner module. Each unit is composed of a dismantlable frame made of 60mm X 40mm X 20mm Thick. epoxy powder coated steel frame. The benches are designed and produced according to SEFA-8 standard.



## Cabinets Materials (Cabinets Types)

### **Metal Laboratory Furniture:**

Metal Laboratory Furniture is a lab standard for a reason. Because of its durability, ease of cleaning, and functionality, metal laboratory furniture is the go-to for modern laboratories. HERAIS Metal laboratory furniture is available in a wide variety of configurations and sizes to promote productivity and sustainability in your laboratory.

Cabinets made of 1.5 mm thick double layer epoxy powder coated mild steel sheet.

All the door hinges and drawer rails are heavy-duty stainless steel with self-closing system.

#### Features and Benefits:

Functional, durable and attractively styled.

Chemical resistant.

Flush front construction.

Removable backs and adjustable doors with full access opening.

Removable bottom panned up to contain spills.

Easy to clean and maintain.

Many other critical features.

Choose from a variety of colors to enhance your specific lab environment.





## Wooden Lab Furniture

When designing or renovating an existing lab it's important to have choices. What if the structure or function of the lab changes in the future? It's not that simple to just start from scratch. Wooden laboratory furniture is designed exactly with this type of customization in mind. Cabinets are made of 19 mm thick melamine Laminated marine plywood with 2 mm PVC edging. All the door hinges and drawer rails are heavy-duty stainless steel with self-closing system. Not only is wood lab furniture long-lasting and stylish but it also comes in a variety of sizes and finishes that can be reconfigured to suit your specific laboratory needs. Features Include:

Functional, durable, and stylish.

Flush overlay construction.

Chemical resistant finishes.

Constructed with  $\frac{3}{4}$ " seven or five marine plywood with continuous ends.

Drawers with a load setting of 75lbs.

Door and drawer fronts have a full  $\frac{3}{4}$ " board with melamine laminate on two sides and  $\frac{3}{8}$ " offset lip on vertical edges.

Low maintenance.



## Stainless Steel Lab

Stainless steel lab furniture is an excellent choice when the workplace demands a sterile environment for harsh or corrosive materials. In fact, the ability of stainless steel to resist corrosive materials, and heat makes it one of the best furniture choices for laboratories because it's designed to last. If your lab is being utilized for work the demands a hygienic, sterile space, then stainless steel furniture is a top choice. When working with specialized materials it's important to choose the correct lab furniture. Cabinets made of double layer Stainless Steel 304 or 316 as per client request. All the door hinges and drawer rails are heavy-duty stainless steel with self-closing system. Benefits and Features of Stainless Steel:

Constructed of 304 Stainless Steel with a number 4-brush finish

Durable and reliable

Highly resistant to corrosion

Resistant to heat and fire

Flush interiors

Non-porous surface for ease of cleaning

Double swinging doors that provide full access to the interior.

See [HERAIS Stainless Steel Solution catalogue](#).





## Worktop Options



### **Epoxy resin Work top:**

Epoxy resin offers a durable, chemically resistant, and easy-to-clean surface. It prevents staining, withstands high temperatures, and provides mechanical strength, ensuring countertop longevity. Customizable colors and patterns add aesthetic versatility. The best top for chemistry and biology labs. Please see [HERAIS epoxy resin work top catalogue](#).



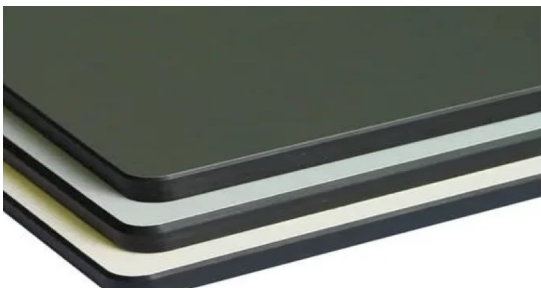
### **Stainless Steel Work top (304 / 316):**

Stainless steel's key advantage is its resistance to rust, stains, and corrosion, making it ideal for laboratory environments requiring hygiene and durability. Its aesthetic appeal, low maintenance, and ability to withstand high temperatures further enhance its popularity. The best tops at Microbiology labs and hospitals in general. Please see [HERAIS Stainless Steel catalogue](#).



### **Phenolic resin / HPL (compact Laminate) Work top:**

resists moisture, chemicals, impact, and scratching. It's easy to clean, available in various colors, and perfect for high-traffic areas. Ideal for commercial, healthcare, and educational settings due to its durability and versatility. It's the best for physics and electronic labs, because of the antistatic feature. Please see [HERAIS HPL catalogue](#).

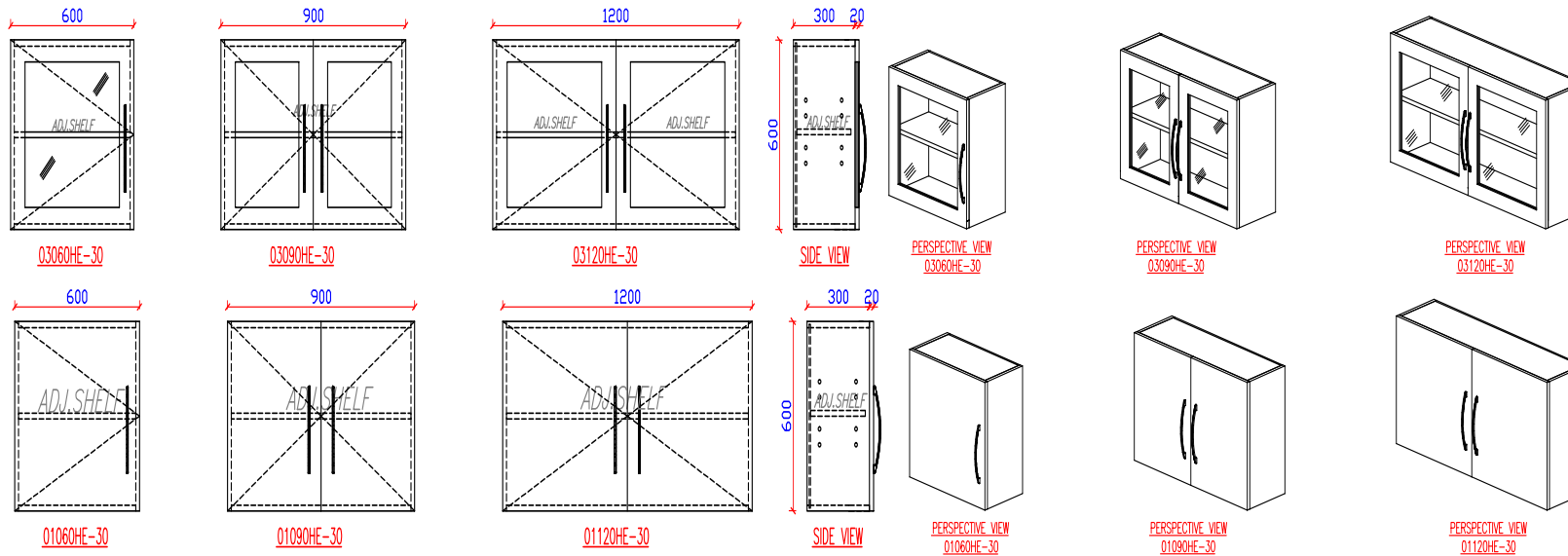


### **Industrial Ceramic work top:**

Industrial ceramics for laboratory worktops offer chemical resistance, high-temperature tolerance, scratch resistance, and hardness. They feature non-porous surfaces, easy maintenance, hygiene, stain resistance and aesthetic options



# Wall Mounted Cabinets



## GENERAL SPECIFICATION

	CORE MATERIAL
<b>CABINET BODY</b>	18mm THICK MELAMINE LAMINATED PLYWOOD.
<b>DOOR FRONT</b>	18mm THICK MELAMINE LAMINATED PLYWOOD.
<b>ADJ./FIXED SHELF</b>	18mm THICK MELAMINE LAMINATED PLYWOOD.
<b>BACK WALL</b>	6mm THICK ONE SIDE MELAMINE FACED MDF

<b>EDGING</b>	3mm THICK PVC EDGING, HOT MELT GLUED AT 20° FOR DOOR & DRAWER FRONTS 0.5mm THICK TAPE EDGING HOTMELT GLUED AT 20° FOR CABINATARY BODY
<b>HINGES</b>	CORROSION PROOF, CLIP-ON, SELF CLOSING HINGES, OPENING UP TO 170°, ADJUSTABLE IN THREE DIRECTION. (HEAVY DUTY STAINLESS STEEL)
<b>GRABRAIL</b>	EXTRUDED ALUMINIUM GRAB RAIL, POWDER COATED
<b>GLASS</b>	6mm THICK TEMPERED GLASS.

	LAMINATE
<b>DOOR FRONT</b>	0.9mm THICK MELAMINE (HOT PRESSED) TEXTURED FINISH, COLOR AS PER CLIENT'S CHOICE
<b>SIDES/BACK/TOP/BOTTOM</b>	0.7mm THICK MELAMINE (HOT PRESSED) MATT FINISH, WHITE COLOR (STANDARD) OR AS PER CLIENT'S CHOICE

## GENERAL SPECIFICATION

	CORE MATERIAL
<b>CABINET BODY</b>	1.25mm THICK COLD ROLLED STEEL SHEET WITH EPOXY POWDER COATING.
<b>DOOR FRONT</b>	1.25mm THICK COLD ROLLED STEEL SHEET WITH EPOXY POWDER COATING.
<b>ADJ./FIXED SHELF</b>	1.25mm THICK COLD ROLLED STEEL SHEET WITH EPOXY POWDER COATING.
<b>BACK WALL</b>	1.25mm THICK COLD ROLLED STEEL SHEET WITH EPOXY POWDER COATING.

<b>HINGES</b>	CORROSION PROOF, CLIP-ON, SELF CLOSING HINGES, OPENING UP TO 170°, ADJUSTABLE IN THREE DIRECTION. (HEAVY DUTY STAINLESS STEEL)
<b>HANDLE</b>	STAINLESS STEEL
<b>GLASS</b>	6mm THICK TEMPERED GLASS.



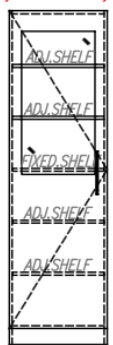
# Tall Storage cabinet

450



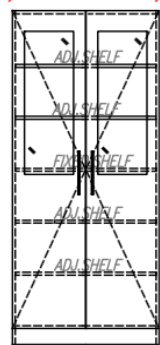
21045HE-54

600



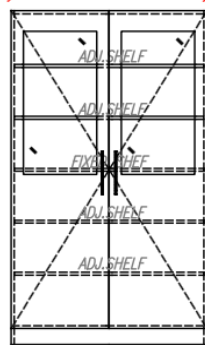
21060HE-54

900



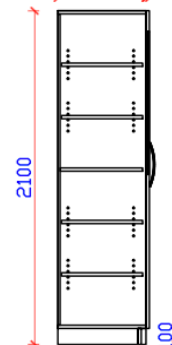
210900HE-54

1200

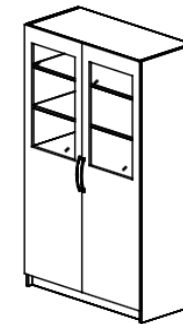


21120HE-54

540 20

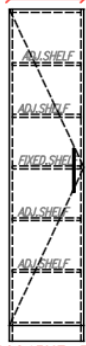


SIDE VIEW



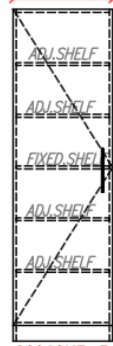
PERSPECTIVE VIEW

450



20045HE-54

600



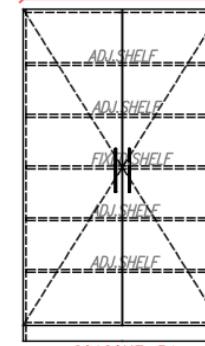
20060HE-54

900



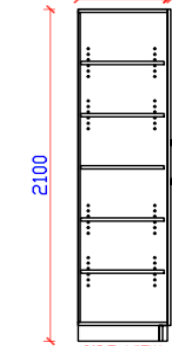
200900HE-54

1200

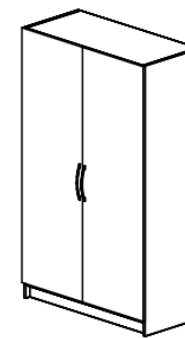


20120HE-54

540 20



SIDE VIEW



PERSPECTIVE VIEW

**GENERAL SPECIFICATION**

	CORE MATERIAL
CABINET BODY	18mm THICK MELAMINE LAMINATED PLYWOOD.
DOOR FRONT	18mm THICK MELAMINE LAMINATED PLYWOOD.
ADJ./FIXED SHELF	18mm THICK MELAMINE LAMINATED PLYWOOD.
BACK WALL	6mm THICK ONE SIDE MELAMINE FACED MDF

EDGING	3mm THICK PVC EDGING, HOT MELT GLUED AT 20° FOR DOOR & DRAWER FRONTS 0.5mm THICK TAPE EDGING HOTMELT GLUED AT 20° FOR CABINATARY BODY
HINGES	CORROSION PROOF, CLIP-ON, SELF CLOSING HINGES, OPENING UP TO 170°, ADJUSTABLE IN THREE DIRECTION. (HEAVY DUTY STAINLESS STEEL)
GRABRAIL	EXTRUDED ALUMINIUM GRAB RAIL, POWDER COATED
GLASS	6mm THICK TEMPERED GLASS.

	LAMINATE
DOOR FRONT	0.9mm THICK MELAMINE (HOT PRESSED) TEXTURED FINISH, COLOR AS PER CLIENT'S CHOICE
SIDES/BACK/TOP/BOTTOM	0.7mm THICK MELAMINE (HOT PRESSED) MAT FINISH, WHITE COLOR (STANDARD) OR AS PER CLIENT'S CHOICE

**GENERAL SPECIFICATION**

	CORE MATERIAL
CABINET BODY	1.25mm THICK COLD ROLLED STEEL SHEET WITH EPOXY POWDER COATING.
DOOR FRONT	1.25mm THICK COLD ROLLED STEEL SHEET WITH EPOXY POWDER COATING.
ADJ./FIXED SHELF	1.25mm THICK COLD ROLLED STEEL SHEET WITH EPOXY POWDER COATING.
BACK WALL	1.25mm THICK COLD ROLLED STEEL SHEET WITH EPOXY POWDER COATING.

HINGES	CORROSION PROOF, CLIP-ON, SELF CLOSING HINGES, OPENING UP TO 170°, ADJUSTABLE IN THREE DIRECTION. (HEAVY DUTY STAINLESS STEEL)
HANDLE	STAINLESS STEEL
GLASS	6mm THICK TEMPERED GLASS.



## Fittings & Accessories

### Laboratory Sinks

- **Epoxy Resin Sink:**

See [HERAIS Epoxy Resin Tops and sinks Catalogue](#).



- **Polypropylene (PP) Sinks:**

See [HERAIS PP drainage system Catalogue](#).



- **Stainless Steel Lab Sinks:**

See [HERAIS Stainless Steel Solutions Catalogue](#).



### Laboratory Fittings:

- Water Fittings
- Gases Fitting
- Emergency Shower & Eyewash system.
- Electrical sockets outlets and standout.
- Electrical Sockets / Data standout.

We provide high quality of the fittings according to your needs.

See [HERAIS Fittings Catalogue](#).



- Chemical Resistant Drainage System.
- See [HERAIS PP drainage system Solutions Catalogue](#).







HOT&COLD WATER MIXER



SINGLE COLD WATER



SINGLE HOLE 2-TAPS COLD WATER



SINGLE HOLE 3-TAPS COLD WATER



DISTILLED WATER



SINGLE GAS STANDOUT



SINGLE GAS OUTLET



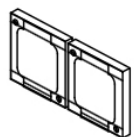
DOUBLE GAS 180° DROP-DOWN



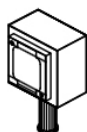
DOUBLE GAS 180° STANDOUT



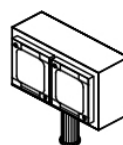
DOUBLE GAS "Y" STANDOUT



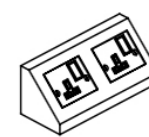
DOUBLE ELECTRICAL SOCKET OUTLET



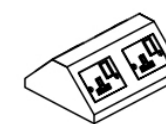
SINGLE ELECTRICAL SOCKET STANDOUT



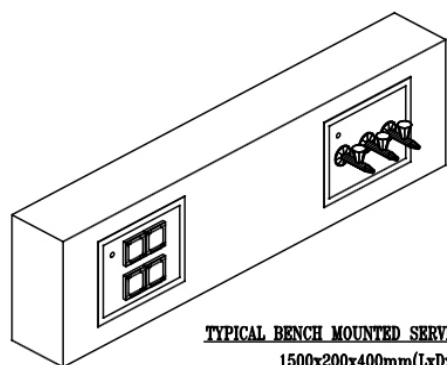
DOUBLE ELECTRICAL SOCKET STANDOUT



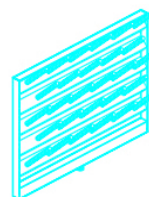
DOUBLE ELECTRICAL SOCKET PEDESTAL BOX



DOUBLE ELECTRICAL 2-WAYT PEDESTAL BOX



TYPICAL BENCH MOUNTED SERVICE TRUNCK  
1500x200x400mm(LxDxH)



PEG-BOARD



BENCH MOUNTED SINGLE EYE WASH



BENCH MOUNTED DOUBLE EYE WASH



EMERGENCY SHOWER

PERSPECTIVE & ELEVATION VIEW FOR FITTINGS

**HERAIS - CANADA**  
www.herais.net  
higt@windowslive.com  
Tel: + 1 (519) 800 1353

## Fume Hoods Cupboard

Fume hoods are systems for safety of laboratory works with hazardous amount of gases, smoke, particle and liquid substances. HERAIS offers wide range of the chemical Fume Hoods. These range includes:

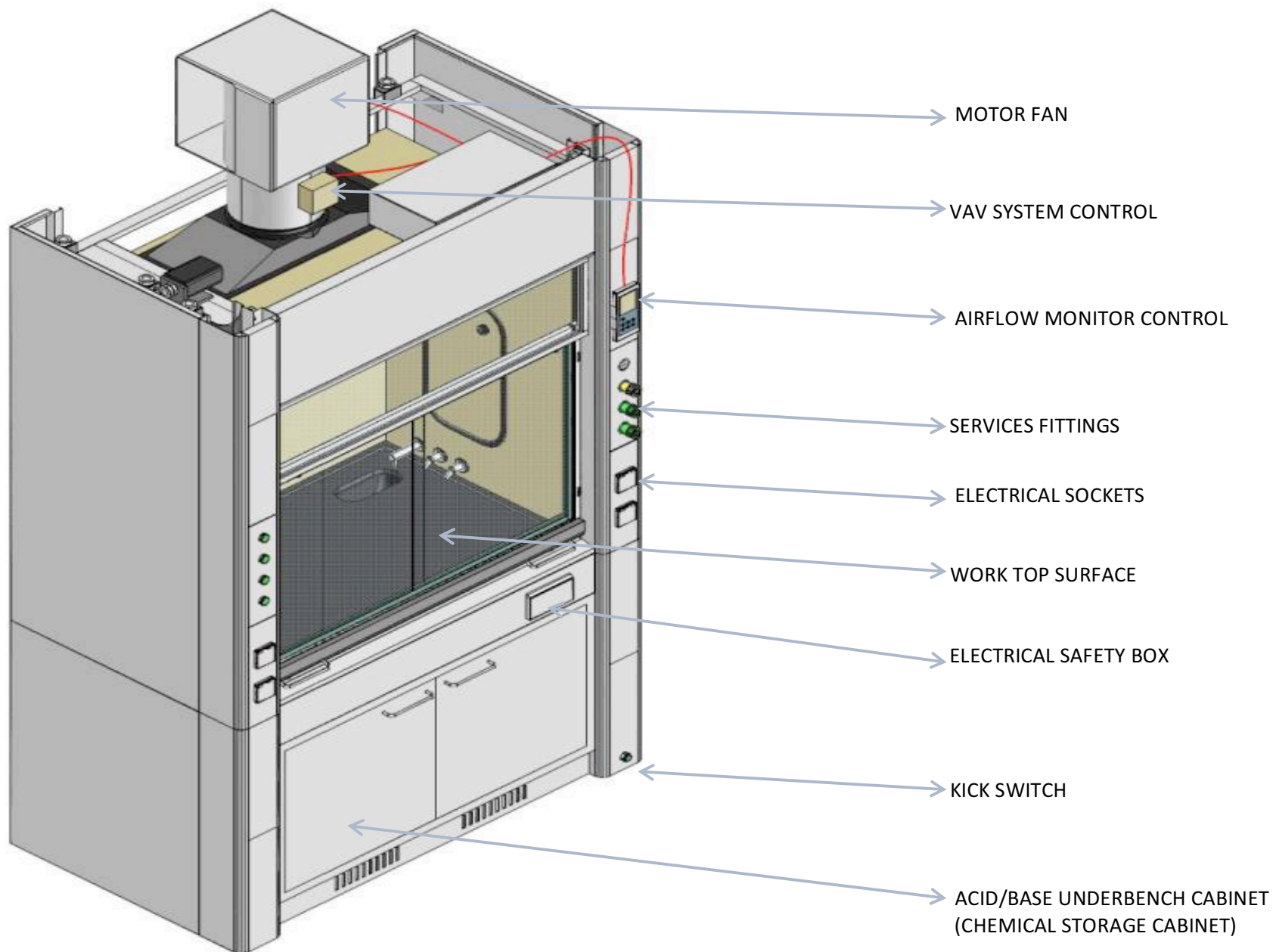
Standard General Fume Hood, Perchloric Acid Fume Hoods, Radioisotope Fume Hoods, Full Stainless Steel Fume Hood, PP Fume Hood, & Histopathology Station Fume hood.

HERAIS Standard fume hoods are designed for ergonomic usage needs for chemical works with high concentration and low corrosive chemicals. Different sizes of the Fume hoods to meet end user needs: HE-FH1200, HE-FH-1500, HE-FH1800 and HE-FH2400 (Walk In Fume Hood).

HERAIS fume hoods manufactured according to EN 14175 standards to increase performance and ensure health safety. Owns CE certificate for user and environment safety. Drainage management systems is included.

See [HERAIS PP drainage system Catalogue](#). Also, you will find other ventilation system solutions.







## Laboratory Items

### Laboratory Refrigerator

The laboratory refrigerator is a device specifically designed for use in the laboratory environment with a set of key characteristics that make it ideal for storing reagents, media, proteins and other products, as well as other biomedical samples, in research, clinical and industrial laboratories.

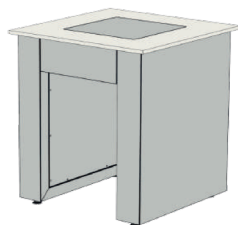
**HERAIS** provide wide range of the medical and laboratory storage refrigerators with different sizes and models. See [HERAIS Cold Chain catalogue](#).



### Balance Tables

HERAIS Balance Tables is maintaining precision and stability. Engineered for enduring performance, these tables seamlessly optimize your weighing procedures. Tailor your setup to meet the most demanding requirements.

Dimension: 750/900/1200mm X 750mm X 750-900mm H



### Chemical Storage Cabinets:

**HERAIS** chemical storage cabinet is the result of precision engineering, designed to offer unparalleled protection against the hazards of chemical storage by significantly enhancing fire resistance. It plays a crucial role in safeguarding valuable chemicals and mitigating the risk of fire spread. It includes all the types of the chemical storage solutions:

**Flammable storage Cabinets (30/60/90 Minutes), Corrosive Cabinet, Toxic Materials storage Cabinet, PP Cabinet, Gas Cylinder Cabinet & Consumable storage cabinet.**



See [HERAIS Storage Solution Catalogue](#).

### Biosafety Cabinets

HERAIS Biological Safety Cabinet is a high-performance containment unit designed to ensure the safety of laboratory personnel, the environment, and sensitive biological materials. This cabinet is ideal for use in research laboratories, clinical diagnostics, and other environments where handling infectious agents or hazardous materials requires stringent containment measures.

**HERAIS** Biosafety Cabinets are fully meets the requirements of US Standard ANSI/NSF49:2016. BSC is a kind of negative pressure filtration system for protecting operator, laboratory environment and experiment materials.

Class I, Class II A, Class II B, Class III.

See [HERAIS Air Protection Catalogue](#).



### Laboratory Chairs

PU upholstery & nylon base with chrome foot ring.

Seat Height adjusts 55-80cm Dimensions: Seat 47wide x 52cm deep: Overall Height: 128cm, Available with castors or glides, Leather, Sturdy Base. Fire-proof lab chairs. Chrome Foot ring (Adjustable), Wipe cleaned covering, no pressure points, Easy to clean, Produced for Lab and hospital use.

As well as wooden student Lab stool.



See [HERAIS Laboratory Chair Technology](#).

### Glassware Dryer Peg-boards

HERAIS provide range of the of the Lab dryer beg-board.

Epoxy Resin board, PP peg-board, Stainless Steel Peg-board.





## Educational Laboratory Furniture



\*\*\*\*\* Refer to **HERAIS EDUCATION LABORATORY FURNITURE CATALOGUE.**

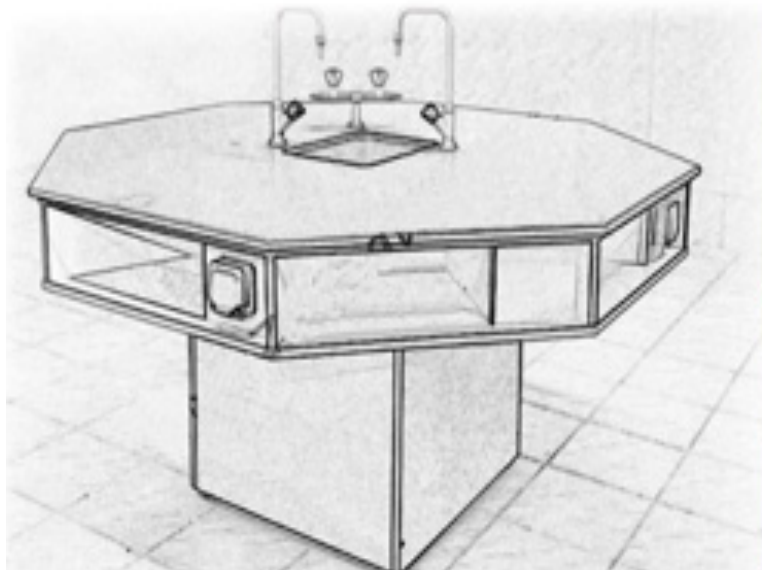


# QUALITY SYSTEM

HERAIS PROVIDES FULL LABORATORY SOLUTIONS WITH HIGH LEVEL OF THE QUALITY CONTROL. WE ARE AN ISO 9001 CERTIFIED, NSF, OSHA STANDARD, CANADA QUALITY STANDARD & SEFA-8.



HERAIS is committed to making sound decisions to manage our environmental footprint and protect the environment.









**Heraiis**  
Lab Solutions

**Heraiis International – Total Lab Solutions**

100 Bessemer Rd., London ON N6E 1R2 Canada

[www.heraiis.ca](http://www.heraiis.ca)

Tel: +1 519 800 1353

Email: [higtc@windowslive.com](mailto:higtc@windowslive.com)

[www.heraiisprojects.com](http://www.heraiisprojects.com)